



ACCENDO LIGHTING



General Description:

All-new high efficiency T5HO/T8 fixture for cost effective lighting of medium- and high-bay warehouses, manufacturing plants, sports facilities, and retail spaces.

New Engineered Lighting:

design features precision-formed beveled specular reflector to achieve maximum light output. White aluminum reflector also available (suffix WHT). Optional wireguard for with innovative fastener design allows easy lamp access.

Lamping Options:

Delivers either 11,000+ lumens from four economical T8 lamps, 19,000+ lumens from four economical T5HO lamps, 18,000+ lumens from six T8 lamps, or 31,000+ lumens from six T5HO lamps; replaces HID fixtures on a one-for-one basis.

Mounting Options:

Surface, pendant, and chain or aircraft cable mounting available.

Specifications:

Housing:	Die-formed heavy-gauge cold rolled steel.
Finish:	Post-painted white housing with either anodized specular or white aluminum reflector.
Ballast Access:	Ballasts are accessible by removal of socket-plate screws. Reflector swings out on hinged ends.
Ballasts:	Designed for use with Class P electronic ballasts for T5HO/T8 lamps.
Lampholders:	Accepts rotary locking sockets and T5HO/T8 lamps.
Mounting:	Fixtures designed for surface, pendant, chain, or aircraft cable mounting.
Wireguard (optional):	Combination 6 & 9 ga. wire (A.W.G. Standard) with white powder-coat finish. Attaches with clips for easy lamp access.
Lensing:	Various lensing and frame options available

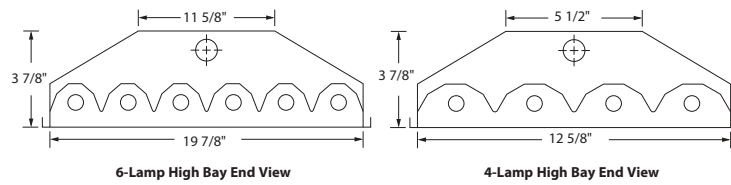
Ordering Information

HB	Lensing	# Of lamps	Lamp	Ballast*	Options
	P-(prismatic .0125)	2	32-T8	IS** (Instant Start)	OS (Occ. Sensor)
	C-(clear polycarbonate)	3	54-T5HO	PS (Program Start)	PW (pre-wired cable)
	Blank-(None)	4			LP (Lamped-Indicate)
	CA (Clear Acrylic .0125)	6			34(3/4" HUB)
	CAF (clear poly .125 w/ Hinged Frame)				Custom (Specify)

*please specify ballast factor when ordering
 **instant start ballasts are not recommended when occupancy sensors are to be used

AL HB-Series T8/T5 High Bay Fixture

Dimensions



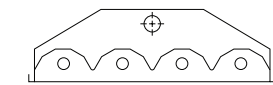
Photometric Data

4-Lamp T5 Hi-Bay
With Open Face
12 x 48 High-bay
Luminaire With Specular
Reflector, No Wire Grid
4 54W T5 H.O. Lamps
(F54/T5HO/835)

TESTING CONDUCTED BY:
Building Acoustics and
Lighting Laboratories, Inc.
DATE: 5/17/02
REPORT NUMBER: 11529.0

Zonal Cavity Coefficients of Utilization

Ceiling	.80				.70				.50			.30			.10			.0		
	Wall	.70	.50	.30	.10	.70	.50	.30	.10	.50	.30	.10	.50	.30	.10	.50	.30	.10	.00	
0	1.17	1.17	1.17	1.17	1.15	1.15	1.15	1.15	1.10	1.10	1.10	1.05	1.05	1.05	1.01	1.01	1.01	1.01	.99	
1	1.09	1.05	1.02	.99	1.07	1.03	1.00	.97	.99	.96	.94	.95	.93	.91	.92	.90	.88	.87	.87	
2	1.01	.94	.88	.83	.99	.92	.87	.82	.89	.84	.81	.86	.82	.79	.83	.80	.77	.75	.75	
3	.93	.84	.77	.72	.91	.83	.76	.71	.80	.75	.70	.77	.73	.69	.75	.71	.68	.66	.66	
4	.86	.76	.68	.62	.84	.74	.67	.62	.72	.66	.61	.70	.64	.60	.68	.63	.59	.57	.57	
5	.79	.68	.60	.54	.77	.67	.59	.53	.65	.58	.53	.63	.57	.52	.61	.56	.52	.50	.50	
6	.73	.61	.53	.47	.71	.60	.52	.47	.58	.52	.46	.57	.51	.46	.55	.50	.46	.44	.44	
7	.68	.55	.47	.41	.66	.54	.47	.41	.53	.46	.41	.52	.45	.41	.50	.45	.40	.39	.39	
8	.62	.50	.42	.36	.61	.49	.41	.36	.48	.41	.36	.47	.40	.36	.45	.40	.35	.34	.34	
9	.58	.45	.37	.32	.56	.44	.37	.31	.43	.36	.31	.42	.36	.31	.41	.35	.31	.29	.29	
10	.53	.41	.33	.28	.52	.40	.33	.28	.39	.32	.28	.38	.32	.28	.37	.32	.28	.26	.26	



End view showing reflector configuration and placement of lamps.

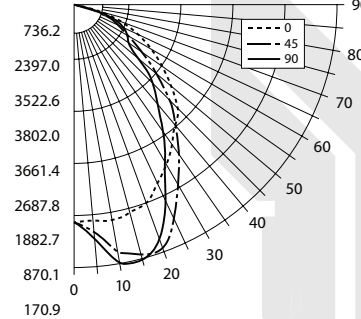
Lumen Summary

Zone	Lumens	% Lamp	% Fixt
0-30	6656	33.3	33.7
0-40	10458	52.3	53.0
0-60	16807	84.0	85.2
0-90	19731	98.7	100.0
90-120	0	0.0	0.0
90-130	0	0.0	0.0
90-150	0	0.0	0.0
90-180	0	0.0	0.0
0-180	19731	98.7	100.0

IES Spacing Criteria

End = 1.3	Diagonal = 1.3	Cross = 1.2
-----------	----------------	-------------

Zonal Lumens

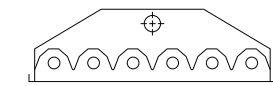


6-Lamp T5 Hi-Bay
With Open Face
20 x 48 High-bay
Luminaire With Specular
Reflector, No Wire Grid
6 54W T5 H.O. Lamps
(F54/T5HO/835)

TESTING CONDUCTED BY:
Building Acoustics and
Lighting Laboratories, Inc.
DATE: 9/24/02
REPORT NUMBER: 11679.0

Zonal Cavity Coefficients of Utilization

Ceiling	.80				.70				.50			.30			.10			.0		
	Wall	.70	.50	.30	.10	.70	.50	.30	.10	.50	.30	.10	.50	.30	.10	.50	.30	.10	.00	
0	1.23	1.23	1.23	1.23	1.20	1.20	1.20	1.20	1.15	1.15	1.15	1.10	1.10	1.10	1.06	1.06	1.06	1.06	1.03	
1	1.15	1.11	1.07	1.04	1.12	1.09	1.05	1.02	1.04	1.02	.99	1.00	.98	.96	.97	.95	.93	.91	.91	
2	1.06	.99	.94	.89	1.04	.98	.92	.88	.94	.90	.86	.91	.87	.84	.88	.85	.82	.80	.80	
3	.99	.89	.82	.77	.96	.88	.81	.76	.85	.79	.75	.82	.77	.73	.80	.76	.72	.70	.70	
4	.91	.80	.73	.67	.89	.79	.72	.66	.77	.70	.65	.74	.69	.64	.72	.68	.64	.62	.62	
5	.84	.72	.64	.58	.82	.71	.63	.57	.69	.62	.57	.67	.61	.56	.65	.60	.56	.54	.54	
6	.78	.65	.57	.51	.76	.64	.56	.51	.63	.56	.50	.61	.55	.50	.59	.54	.49	.48	.48	
7	.72	.59	.51	.45	.70	.58	.50	.45	.57	.50	.45	.55	.49	.44	.54	.48	.44	.42	.42	
8	.67	.53	.45	.40	.65	.53	.45	.39	.51	.44	.39	.50	.44	.39	.49	.43	.39	.37	.37	
9	.61	.48	.40	.35	.60	.48	.40	.35	.46	.39	.34	.45	.39	.34	.44	.38	.34	.32	.32	
10	.57	.44	.36	.31	.56	.43	.36	.31	.42	.35	.31	.41	.35	.31	.40	.35	.30	.29	.29	



End view showing reflector configuration and placement of lamps.

Lumen Summary

Zone	Lumens	% Lamp	% Fixt
0-30	11090	37.0	35.7
0-40	17185	57.3	55.4
0-60	26838	89.5	86.4
0-90	31046	103.5	100.0
90-120	0	0.0	0.0
90-130	0	0.0	0.0
90-150	0	0.0	0.0
90-180	0	0.0	0.0
0-180	31046	103.5	100.0

IES Spacing Criteria

End = 1.3	Diagonal = 1.2	Cross = 1.1
-----------	----------------	-------------

Zonal Lumens

