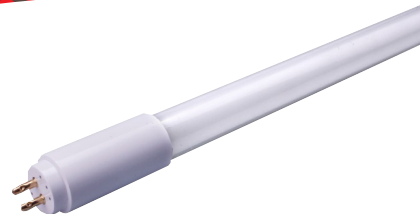




ACCENDO
LIGHTING



General Description:

Our unique line of UL Listed LED tubes have been developed specifically to take advantage of North American energy rebates and incentives. Accendo offers the highest quality products at the absolute best price. All of our tubes come with our no hassle 5YR 50,000 HR Guarantee. However advances in LED technology have made them less costly to acquire and install. In addition to saving energy, LEDs emit less heat, reducing the load on HVAC systems and are also controllable, and more compact, offering more design flexibility. The ballast compatible series LED offers an all glass tube housing, while providing up to 133 LPW.

Features and Benefits:

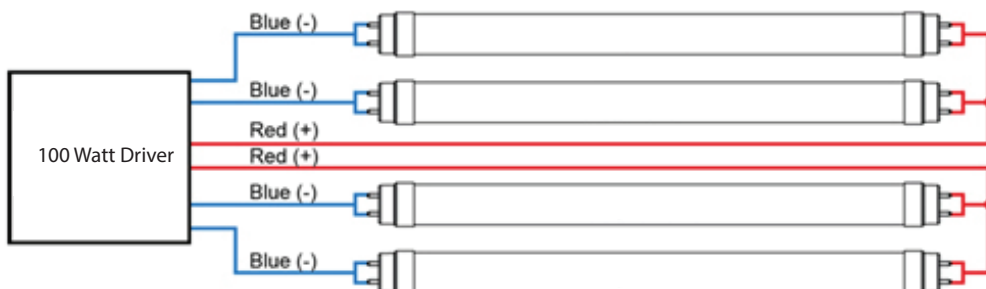
- Advanced dimming with Pro-DIM technology:
- 0-10V and/or AB dimming
- No Polarity: lamp ends can be reversed
- Same wiring as fluorescent lamp/ballast system
- UL 1598C for safety
- Full glass as fluorescent T5
- No Mercury, No UV
- Suitable for Dry and Damp Locations
- Low Temperature Operation
- Instant On
- 50,000 hours with no limitation on On/Off Cycles
- 5-year Warranty
- Evaluated for use in totally enclosed, recessed luminaires, surface mount wall and ceiling luminaires, outdoor luminaires (open surface mount luminaires with compartment protection from weather)
- For use with Class 2 driver only

Ordering Information

Model No.	System Wattage	Lamp Wattage	Length	CRI	Lumens	LPW	Beam Angle	CCT
24" Model								
AL24T5HE/830/11G-XT	12	9	24"	82	1300	108	240°	3000K
AL24T5HO/830/11G-XT	15	12	24"	82	1700	113	240°	3000K
AL24T5HE/835/11G-XT	12	9	24"	82	1300	108	240°	3500K
AL24T5HO/835/11G-XT	15	12	24"	82	1700	113	240°	3500K
AL24T5HE/840/11G-XT	12	9	24"	82	1300	108	240°	4000K
AL24T5HO/840/11G-XT	15	12	24"	82	1700	113	240°	4000K
AL24T5HE/850/11G-XT	12	9	24"	82	1300	108	240°	5000K
AL24T5HO/850/11G-XT	15	12	24"	82	1700	113	240°	5000K
36" Model								
AL36T5HE/830/11G-XT	18	13	36"	82	1900	118	240°	3000K
AL36T5HO/830/11G-XT	21	18	36"	82	2500	119	240°	3000K
AL36T5HE/835/11G-XT	18	13	36"	82	1900	118	240°	3500K
AL36T5HO/835/11G-XT	21	18	36"	82	2500	119	240°	3500K
AL36T5HE/840/11G-XT	18	13	36"	82	1900	118	240°	4000K
AL36T5HO/840/11G-XT	21	18	36"	82	2500	119	240°	4000K
AL36T5HE/850/11G-XT	18	13	36"	82	1900	118	240°	5000K
AL36T5HO/850/11G-XT	21	18	36"	82	2500	119	240°	5000K
48" Model								
AL48T5HE/830/11G-XT	18	15	48"	82	2200	122	240°	3000K
AL48T5HO/830/11G-XT	27	24	48"	82	3300	122	240°	3000K
AL48T5HE/835/11G-XT	18	15	48"	82	2200	122	240°	3500K
AL48T5HO/835/11G-XT	27	24	48"	82	3300	122	240°	3500K
AL48T5HE/840/11G-XT	18	15	48"	82	2200	122	240°	4000K
AL48T5HO/840/11G-XT	27	24	48"	82	3300	122	240°	4000K
AL48T5HE/850/11G-XT	18	15	48"	82	2200	122	240°	5000K
AL48T5HO/850/11G-XT	27	24	48"	82	3300	122	240°	5000K

Wiring Diagram:

consult factory for all Class 2 driver options available.



50,000 HR - 5 Year Warranty

